

UBUTAKA

Akarere ka Nyanza gafite ubutaka bwabaruwe buhabwa numero ziburanga n'ikigo gishwinzwe umutungo kamere . Imbonerahamwe ikurikira irerekana muri make umubare n'ubuso bw'ubutaka.

Imbonerahamwe:Umubare w'ibibanza n'ubuso

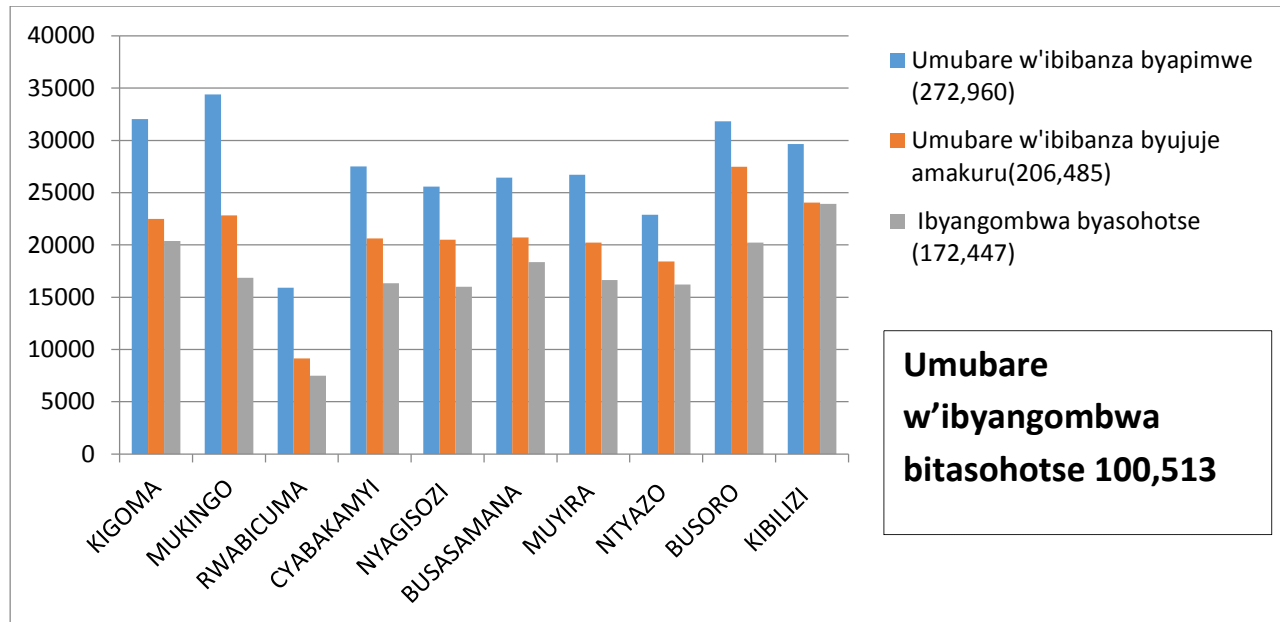
| Icyo bukorerwaho | Umubare | Ubuso |
|------------------------------------|---------|-------------|
| Ubutaka buhingwa | 158 | 484.4623 Ha |
| Ubutaka buriho inyubako | 258 | 188.0295 Ha |
| Ibishanga | 202 | 3343.684Ha |

1 Imicungire y'ubutaka n'imiturire

1 Kwandikisha ubutaka 2009

Igikorwa cyo kwandika ubutaka mu Karere ka Nyanza kimwe n'ahandi mu gihugu cyarakozwe kirarangira kikaba cyari cyaratangiye mu kwezi k'Ukwakira 2009, ubu ubutaka bwose bwo mu Karere kukaba bwabaruwe nibyangombwa biratangwa kugera ku kigero cya 90% .Nyuma yo kubarura ubutaka hakaba hatangwa ibyangombwa ku batarabifashe kubera impamvu zitandukanye: abatarujije amakuru, abatari bahari.

'Graphique': Uburyo ubutaka bwabaruwe n'ibyangombwa byatanzwe 2011



Umurenge wa Rwabicuma ni wo murenge muto ufite ubutaka bucyeye.

2 Kwakira no gutanga ibyangombwa 2012-2015

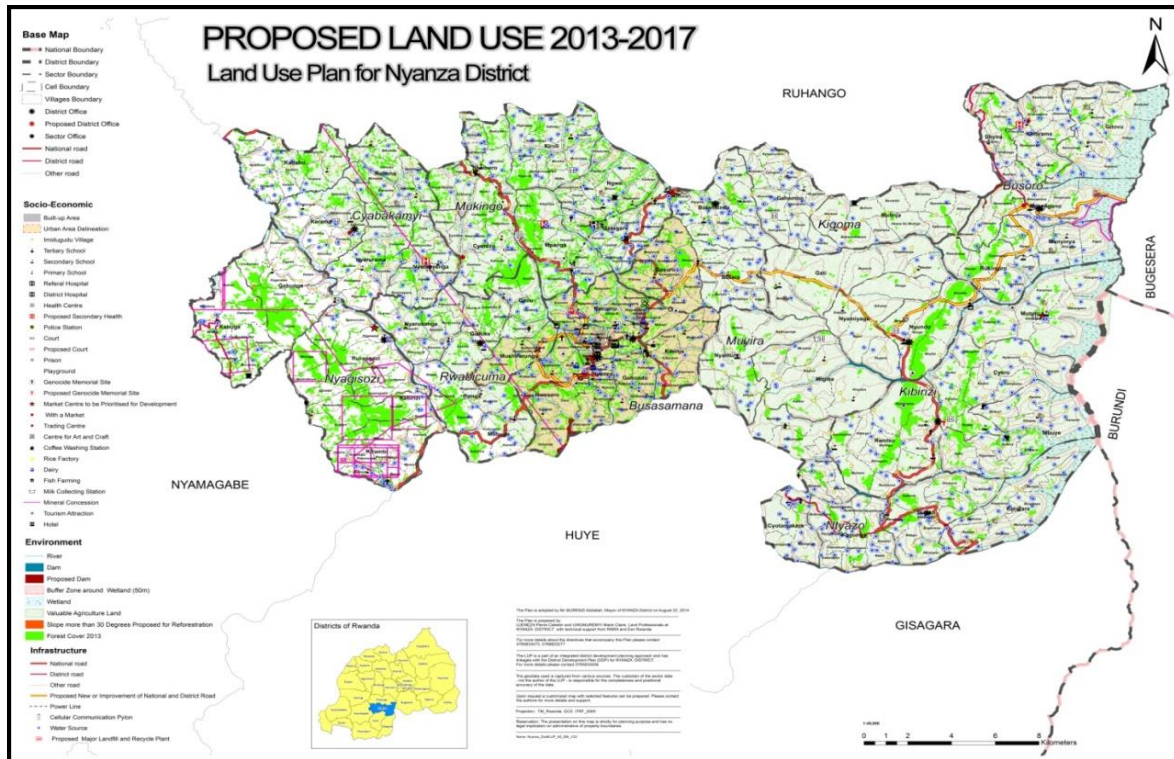
Twakomeje kwakira ibyangombwabyabaturage bakeneye guhinduza n'abatarabashije gufata ibyangombwa byabo mbere.

Imbonerahamwe:Gutanga ibyangombwa nyuma yo gutanga nyuma ya 2011

| Umwaka | Umubare w'ibyangombwa | Icyongerwa |
|--------|-----------------------|--|
| 2012 | 862 | Abaturage bamwe bari bagitegereje ko bazazanirwa ibyangombwa mu Kagari. |
| 2013 | 1,582 | |
| 2014 | 1,891 | |
| 2015 | 2,100 | |
| Total | 6,435 | Ugereranyije n'ibigaragara kuri "graphic"yo hejuru,bigaragara ko umubare w'abantu baza gufata ibyangombwa byabo ukiri muto, cyane ko ibyangombwa bitasohotse ari |

3. Imicungire y'ubutaka

Mu rwego rwo kunoza imicungire y'ubutaka ku bufatanye n'ikigo cy'igihugu cy'umutungo kamere hakoze igishushanyo rusange cy'imikoreshereze y'ubutaka mu Karere ka Nyanza.

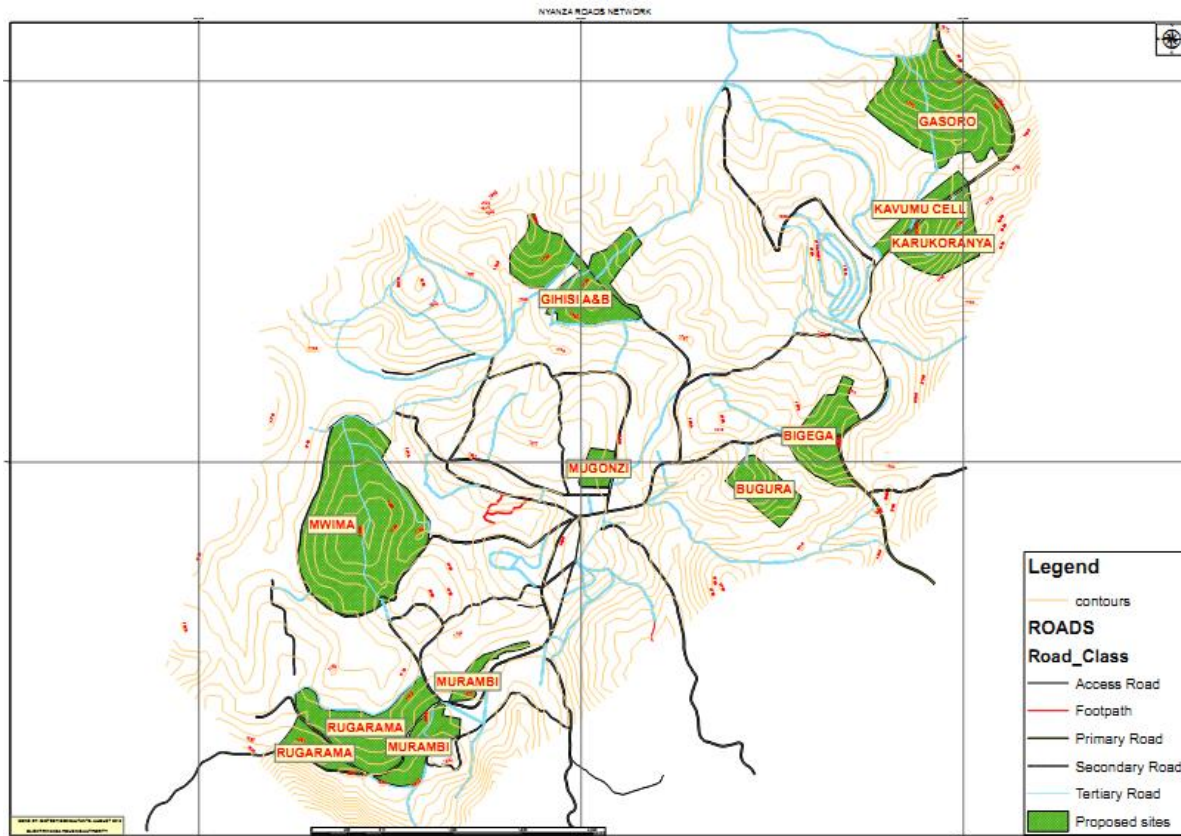


4. Gutunganya Umujyi

Ibishushanyo mbonera byihariye

Mu rwego rwo gutunganya rwo gutunganya umujyi hakoze ibishushanyombonera byihariye bya site zitandukanye mu Mujyi ku buso bwa hegitari 500 ku bufatanye n'Ikigo cy'Imiturire mu Rwanda. Izo site ni izi zikurikira: Gasoro, Karukoranya Mugandamure A na B, Gihisi A na B, Mwima, Rugarama, Murambi, Mugonzi, Kamatovu, Bugura na Bigega,

Ikarita: Amasite yakorewe igishushanyombonera mu muji wa nyanza



5. Ishyirwa mu bikorwa ry'ibishushanyombonera byihariye

Mu rwego rwo gushyira mu bikorwa ibishushanyombonera byihariye bya site zo mu Mujiy hacuwe imihanda kuri site zitandukanye mu Mujiy wa Nyanza. Izo site ni izi zikurikira: Rugarama, Mwima, Gasoro, Rukari, Kiberinka, Nyamagana, Karukorany, Mugandamure na Bigega hifashishijwe TIG hakaba haraciwe imihanda ya kilometero mirongo itanu na bitanu 55 km

6. Imiturire muri rusange

Hashingiwe kuri raporo y'imiturire yaturutse mumirerenge yose igize akarere ka Nyanza ikigereranyo cy'ingo zituye neza ni 88.9% .

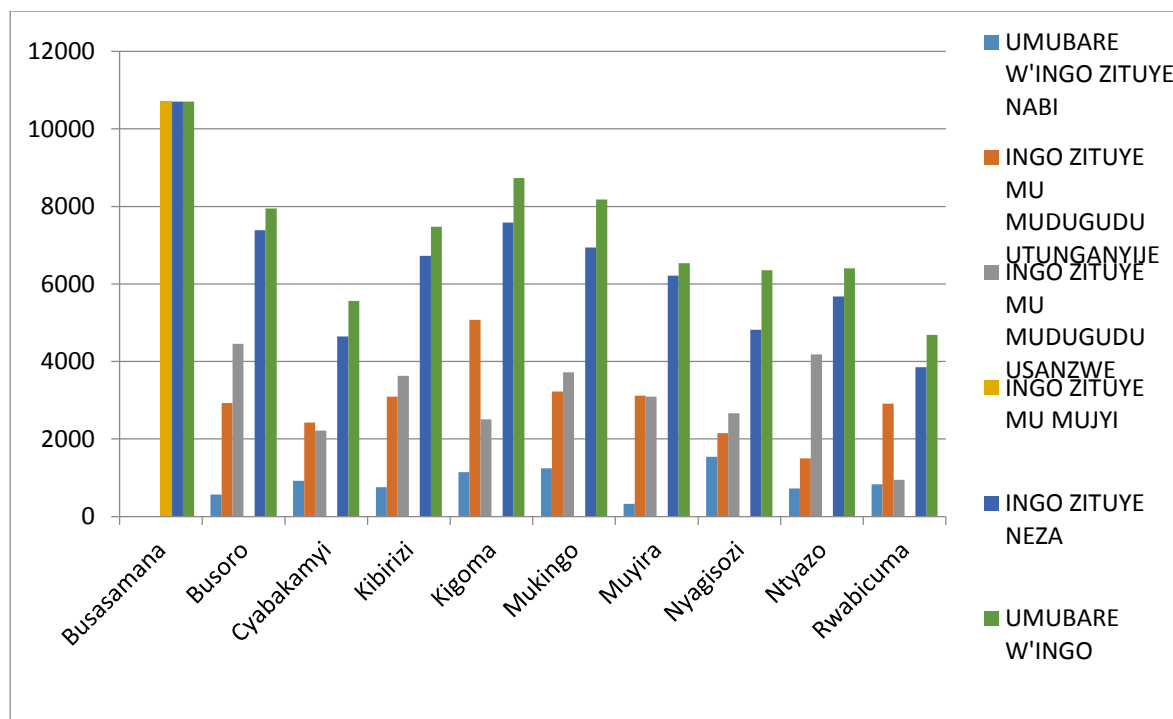
Imbonerahamwe ikurikira yerekana umubare w'ingo zituye neza ni ukuvuga: muri site z'imidugudu zisanzwe, ingo zituye mu midugudu itunganije, n'ingo zituye mu Mujiy.

Imbonerahamwe:Umubare w'ingo zituye neza n'izituye nabi mu karere ka Nyanza

| Umureng e | Umubare w'ingo zituye nabi | Ingo zituye neza | | | | Umubare w'ingo zose | Ijanisha |
|--|----------------------------------|--|--|----------------------------|---------------|---------------------------|--------------|
| | | Ingo zituye mu mudugudu utunganyije | Ingo zituye mu mudugudu usanzwe | Ingo zituye mu mujyi | Igiteranyo | | |
| Busasama na | 0 | 0 | 0 | 10,701 | 10,701 | 10,701 | 100.0 |
| Busoro | 564 | 2929 | 4455 | 0 | 7,384 | 7,948 | 92.9 |
| Cyabaka myi | 919 | 2423 | 2220 | 0 | 4,643 | 5,562 | 83.5 |
| Kibirizi | 756 | 3,096 | 3,629 | 0 | 6,725 | 7,481 | 89.9 |
| Kigoma | 1,148 | 5077 | 2505 | 0 | 7,582 | 8,730 | 86.8 |
| Mukingo | 1,240 | 3223 | 3719 | 0 | 6,942 | 8,182 | 84.8 |
| Muyira | 326 | 3120 | 3090 | 0 | 6,210 | 6,536 | 95.0 |
| Nyagisozi | 1540 | 2151 | 2666 | 0 | 4,817 | 6,357 | 75.8 |
| Ntyazo | 721 | 1502 | 4179 | 0 | 5,681 | 6,402 | 88.7 |
| Rwabicu ma | 831 | 2910 | 946 | 0 | 3,856 | 4,687 | 82.3 |
| Igiteranyo cya byose | 8,045 | 26,431 | 27,409 | 10,701 | 64,541 | 72,586 | 88.9 |
| | | | | | | | |
| Umubare w'Ingo zose zituye neza: 88.9 % (64541 kuri 72586) | | | | | | | |

| | |
|---------------|---|
| Icyitonderwa: | |
| | Ingo zituye nabi 11.1% (8045/72586) |
| | Ingo zituye neza mu cyaro 78.63% (53840/68467) |
| | Ingo zituye mu mudugudu utunganyije (Planned Settlement): 48.31% (26431/54705) |

'Graphique':Uburyo bw'imiturire mu Karere ka Nyanza



7. Gutuza abantu mu midugudu y'ikitegererezo mu cyaro

Ifoto: Mushirarungu/muri Rwabicuma (Ibumoso)Kigarama muri Nyagisozi (iburyo)



Rwabicuma,ukwakira 2015



Nyagisozi,Ukwakira 2015

8. Imiturire mu Mujyi

Mu rwego rwo kunoza imiturire mu mujyi hatanzwe ibyangombwa byo kubaka no gusana.

Witegereje “Graphic” ikurikira, usanga kuva 2011 kugeza 2015 imibare igenda yiyongera, ibyo byerekana neza ko abaturage bo mu mujyi wa Nyanza bakangukiye kubaka bafite ibyangombwa cyane .

'Graphique : ubwiyongere bw'abaturage basabye ibyangombwa byo kubaka

